



MODEL WORKS LA INC.

ARCHITECTURAL MODELS

City Center

LAS VEGAS, NEVADA





CITY CENTER
MULTIUSE DEVELOPMENT
LAS VEGAS, NEVADA
SCALE: 1" = 20'
BASE: 175" X 139

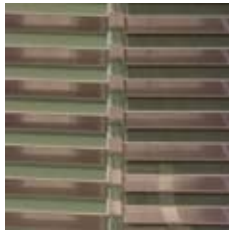
DESIGNED BY A TEAM OF INTERNATIONAL
ARCHITECTS: STUDIO DANIEL LIBESKIND; RV AR-
CHITECTURE; HELMUT JAHN; KOHN PEDERSEN
FOX ASSOCIATES



Vdara

VDARA CONDO HOTEL
CITY CENTER
LAS VEGAS, NEVADA
SCALE: 1" = 8'
BASE: 60" X 70'

RV ARCHITECTURE, LLC



Veer Towers

CITY CENTER
LAS VEGAS, NEVADA

RESIDENTIAL
SCALE: 1" = 8'
BASE: 60" X 60"

HELMUT JAHN





Mandarin Oriental



CITY CENTER
LAS VEGAS, NEVADA
HOTEL AND RESIDENCE
SCALE: 1" = 8'
BASE: 93" X 43"

KOHN PEDERSEN FOX ASSOCIATES



Panorama Towers

PANORAMA TOWERS
LAS VEGAS, NEVADA
LUXURY CONDOMINIUMS
SCALE: 3" = 16'
BASE: 90" DIM

KLAJUBA ARCHITECTS



MODEL OF LAS VEGAS STRIP
FULL DETAIL
LAS VEGAS, NEVADA
SCALE: 1" = 100"
BASE: 13' X 6'
MODEL WORKS INC.





L.A. LIVE

DETAIL, L.A. LIVE
LOS ANGELES, CALIFORNIA
SCALE: 1/32
BASE:

CLAINT AEG



L.A. LIVE
LOS ANGELES, CALIFORNIA
MIXED USE RETAIL, RESIDENTIAL, TELEVISION
AND RADIO BROADCAST STUDIOS, ENTERTAIN-
MENT VENUES

SCALE: 1" = 32'
BASE: 98" X 74"

AEG PROJECT (GENSLER, FELS ARCHITECTS,
RIOS CLEMENTE HALE STUDIO)



AURA



AURA CONDOMINIUM
SACRAMENTO, CALIFORNIA
LUXURY RESIDENTIAL
SCALE: 1" = 16'
BASE: 24" X 38"

DANIEL LIBESKIND



PALMS PLACE



PALMS PLACE HOTEL CONDO
LAS VEGAS, NEVADA
SCALE: 1" = 16'
BASE: 36"

JERDE

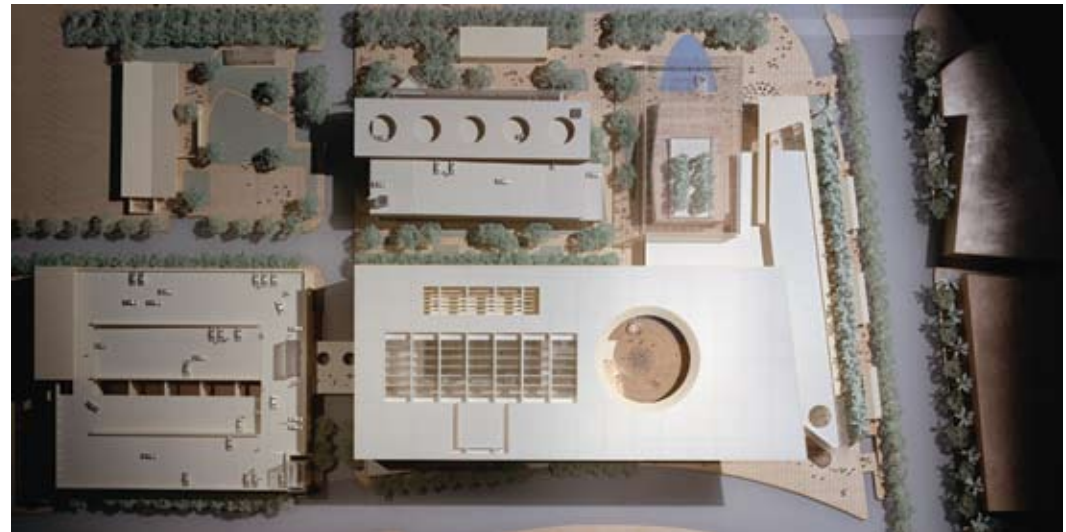


MASTERPLAN SAUDI PROJECT

SCALE: 1000 MM.
BASE: 10' X 10'

GENSLER DC





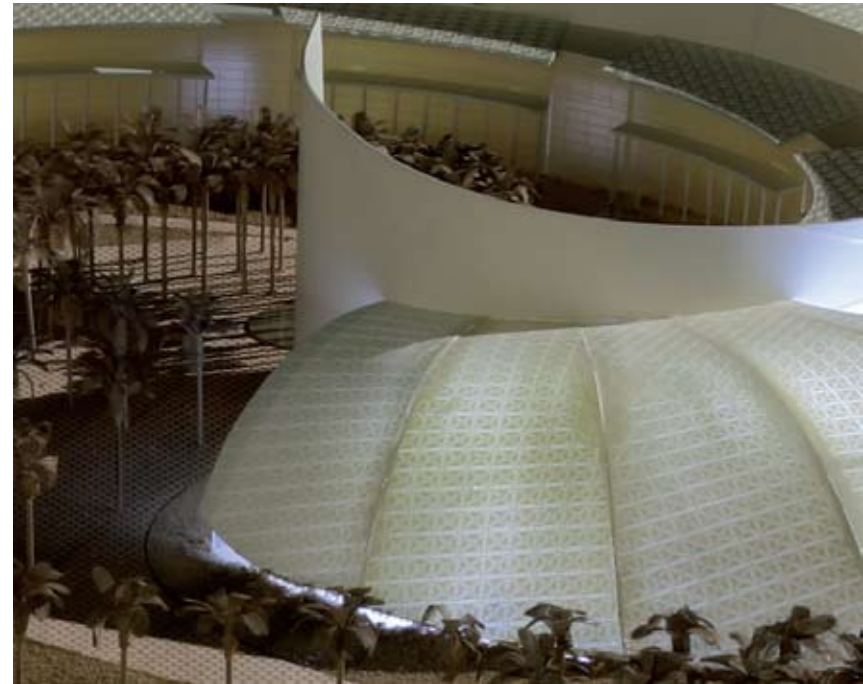
COMPETITION MODEL
LOS ANGELES POLICE HEADQUARTERS
SCALE: 1" = 32'
BASE: 48" X 60"

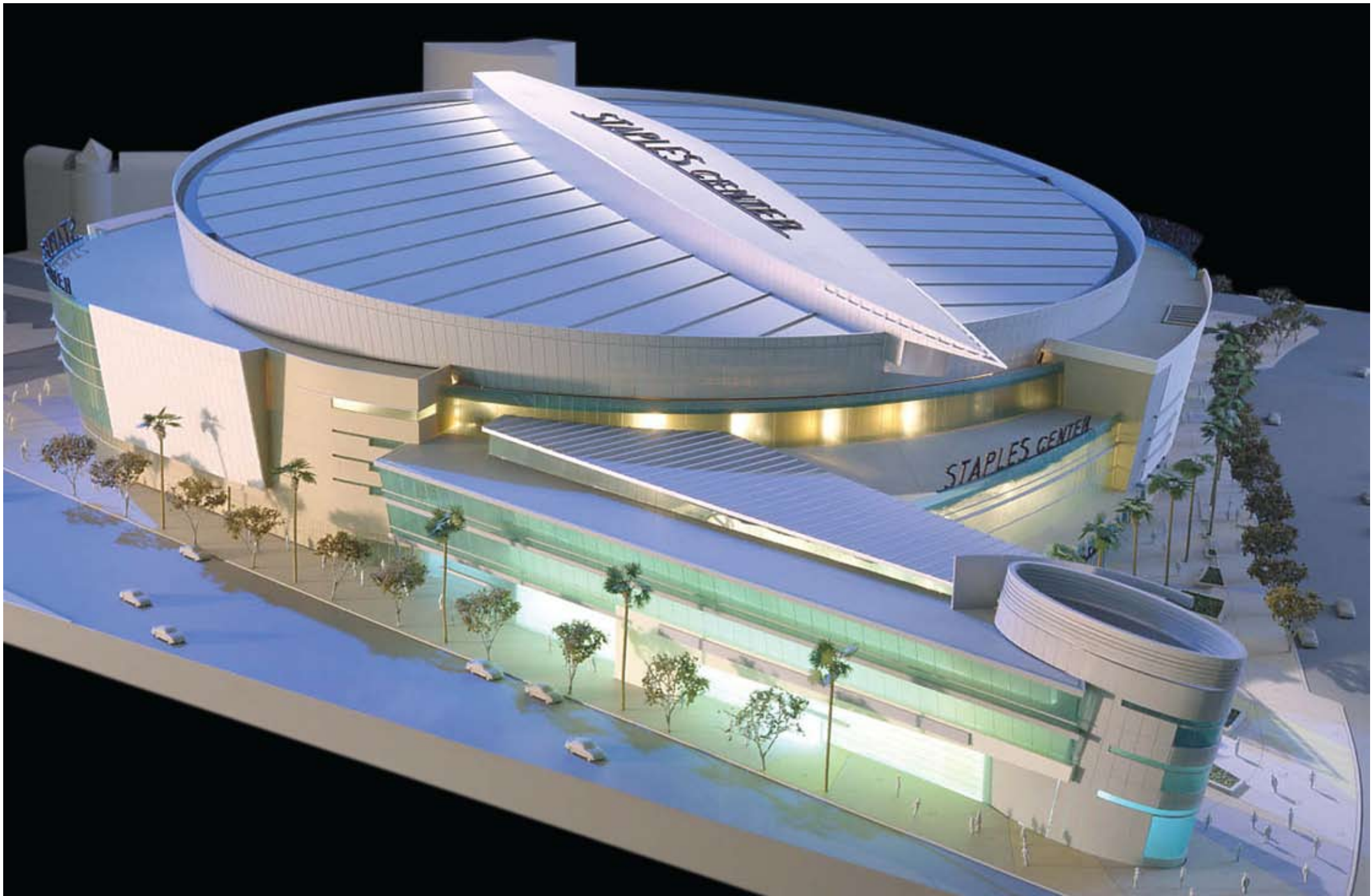
DMJM



DUBAI UNIVERSITY CAMPUS
DUBAI, UNITED ARAB EMIRATES
SCALE: 250 M
BASE: 87" X 87"

DMJM DC

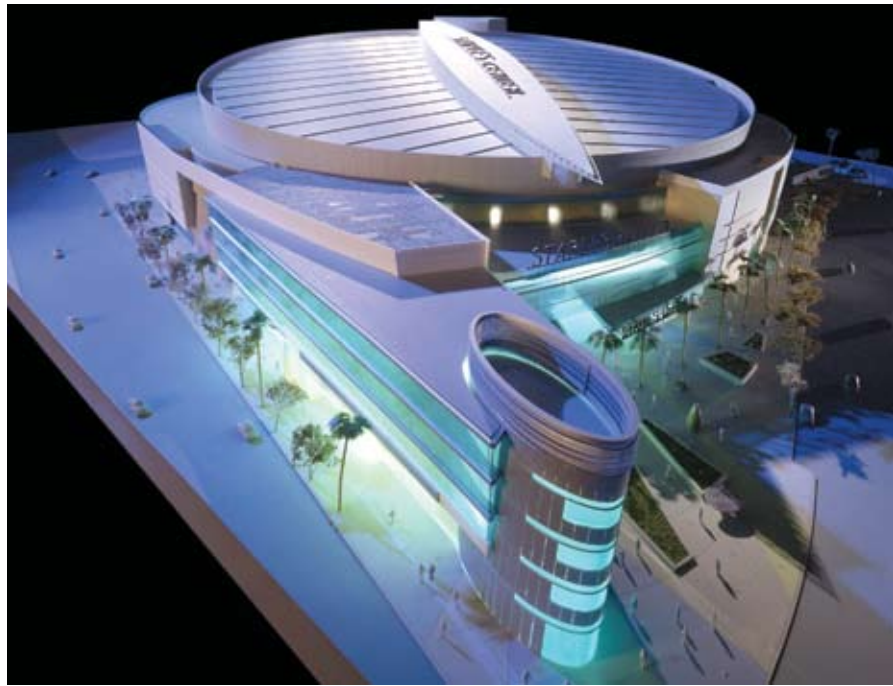




STAPLES CENTER

STAPLES CENTER
LOS ANGELES, CALIFORNIA
SCALE: 1' = 16"
BASE: 60" X 60"

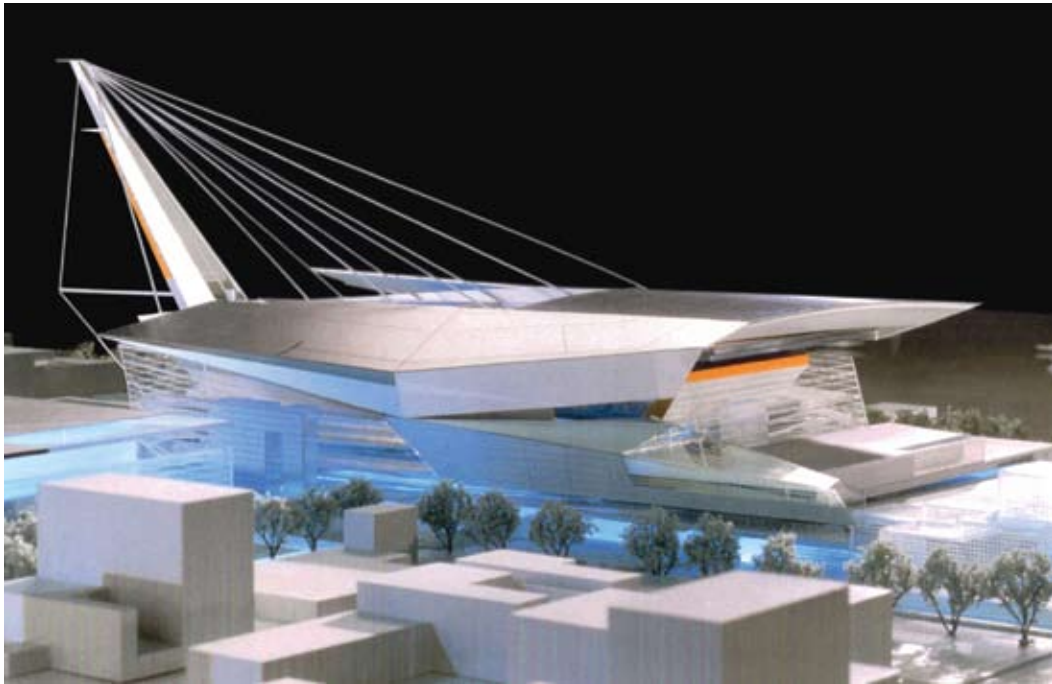
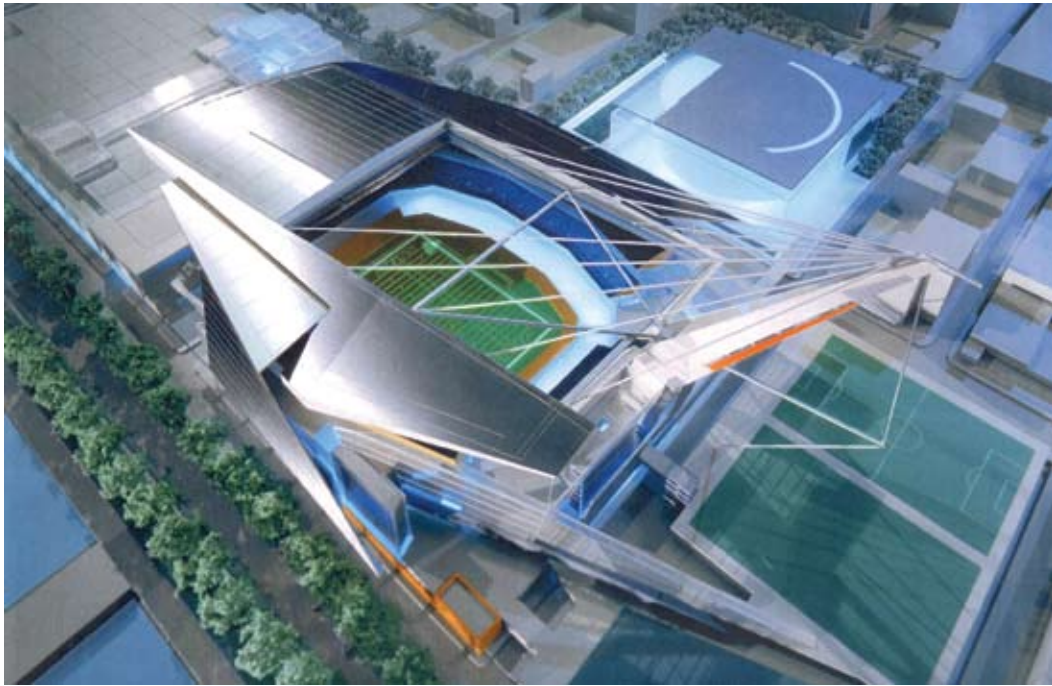
NBBJ ARCHITECTS





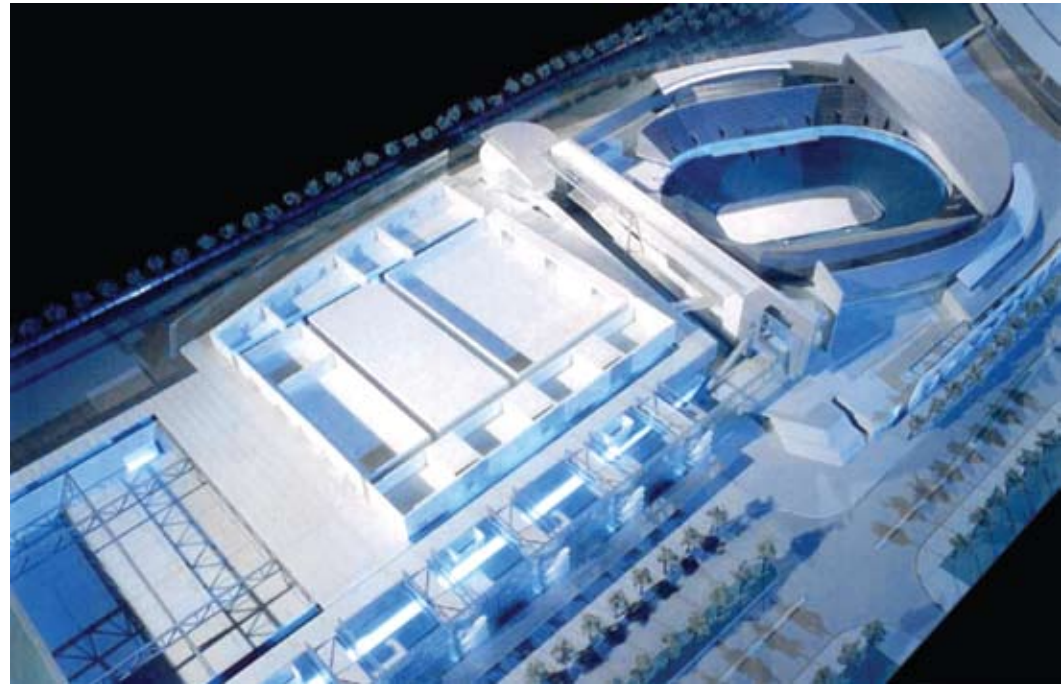
A BALL PARK FOR SAN DIEGO
SAN DIEGO, CALIFORNIA
SCALE: 1" = 32'
BASE: 36" X 48"

ANNTOINE PREDOCK / HOK SPORTS



NEW YORK JETS STADIUM
 ???COMPETITION MODEL
 SCALE:
 BASE:

NBBJ



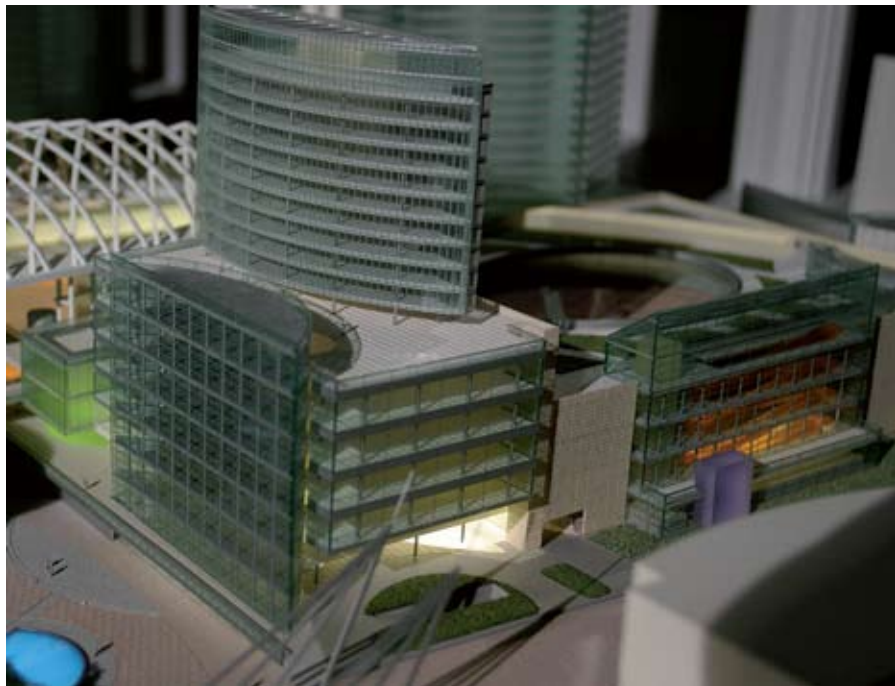
DESIGN FOR NEW
 LOS ANGELES COLISEUM
 LOS ANGELES, CALIFORNIA
 SCALE: 1" = 60'
 BASE: 24" X 24"

ARCHITECT:



DESIGN FOR SOCCER STADIUM
SALT LAKE CITY, UTAH
SCALE: 1" = 32'
BASE: 36" X 48"

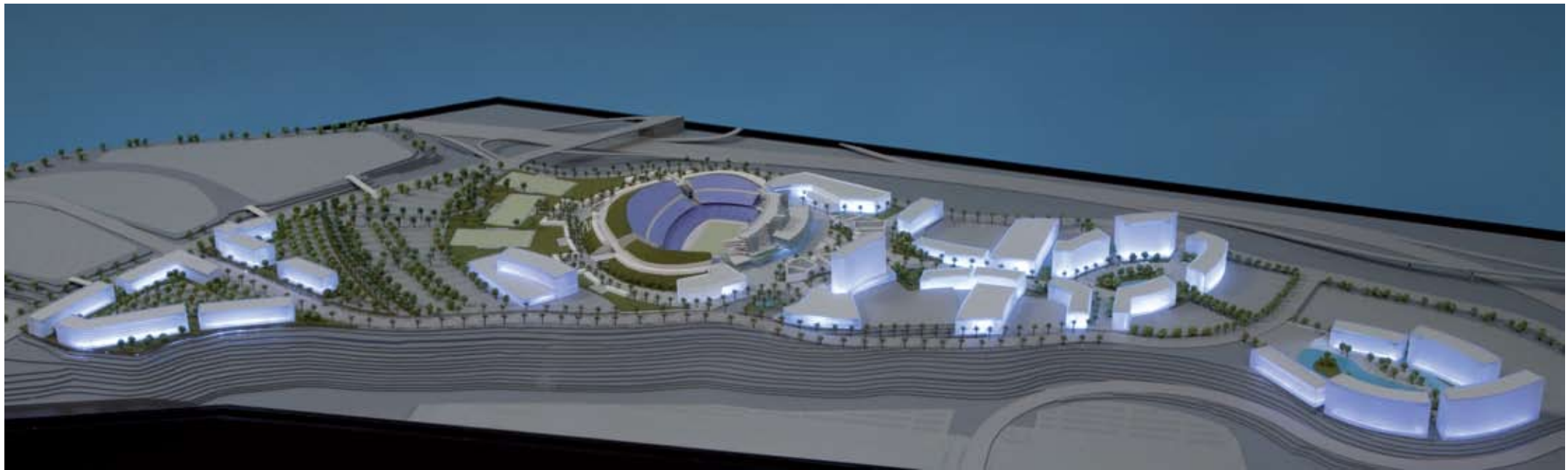
ROSSETTI ARCHITECTURE



COMPETITION MODEL
HWASUNG DONGTAN PF PROJECT
HWASUNG, KOREA
SCALE: 800 MM
BASE: 48" X 36"



LOS ANGELES STADIUM





DARB AL-KHALIL DEVELOPMENT
CITY OF MAKKAH, KINGDOM OF SAUD ARABIA
MULTIUSE CONDOMINIUMS
SCALE: 500M
BASE: 18.M X .5M

GENSLER, DC



SKIRBALL CULTURE CENTER
LOS ANGELES, CALIFORNIA
SCALE: 1" = 32'
BASE: 74" X 48"

MOSHE SAFDIE AND ASSOC., INC.



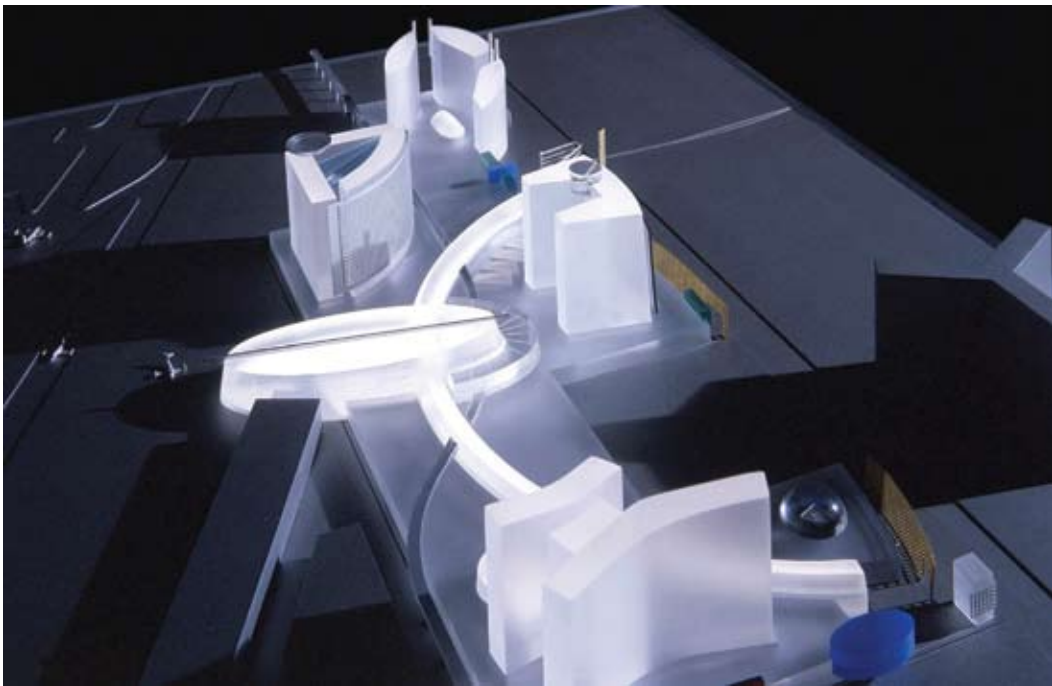
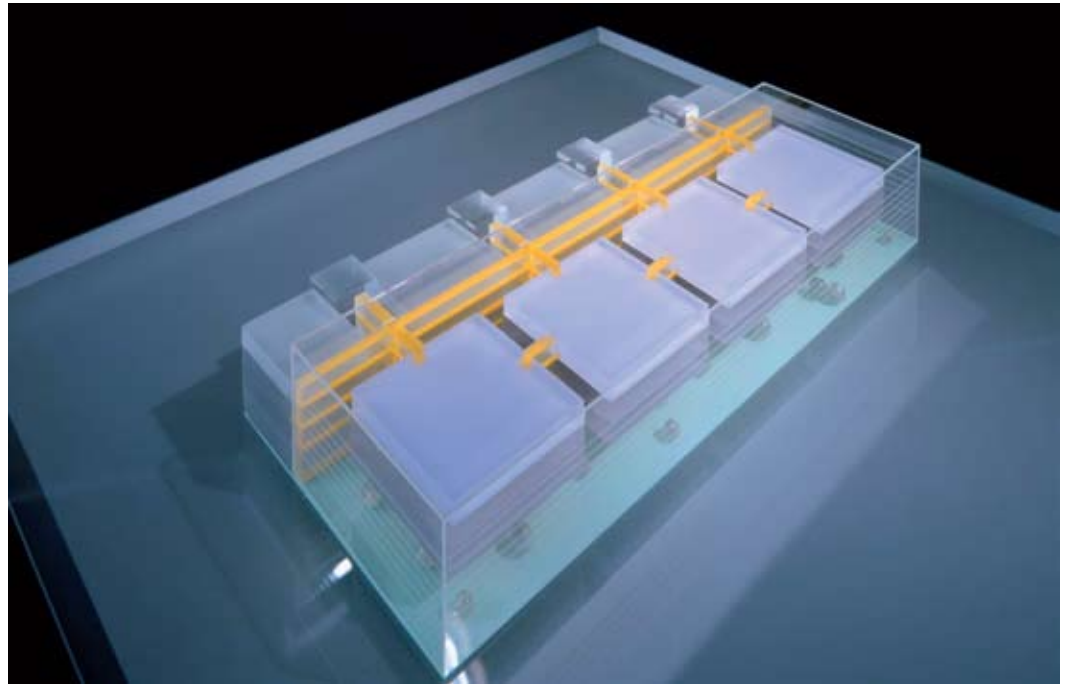
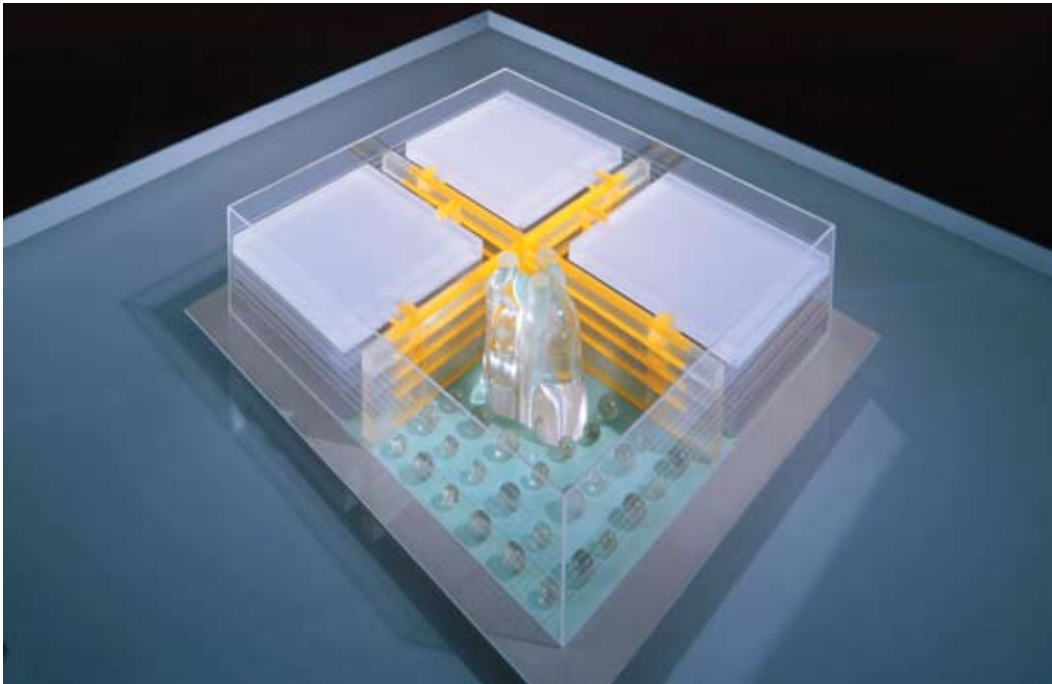
CONDOMINIUM (NAME)
AUSTIN, TEXAS
SCALE: 3" X 16'
BASE: 68" X 70"

GENSLER



UNION PACIFIC CENTER
CORPORATE HEADQUARTERS
OMAHA, NEBRASKA
SCALE: 1" = 16"
BASE: 36" X 36"

GENSLER DC



STUDY MODELS
CONCEPT MODELS

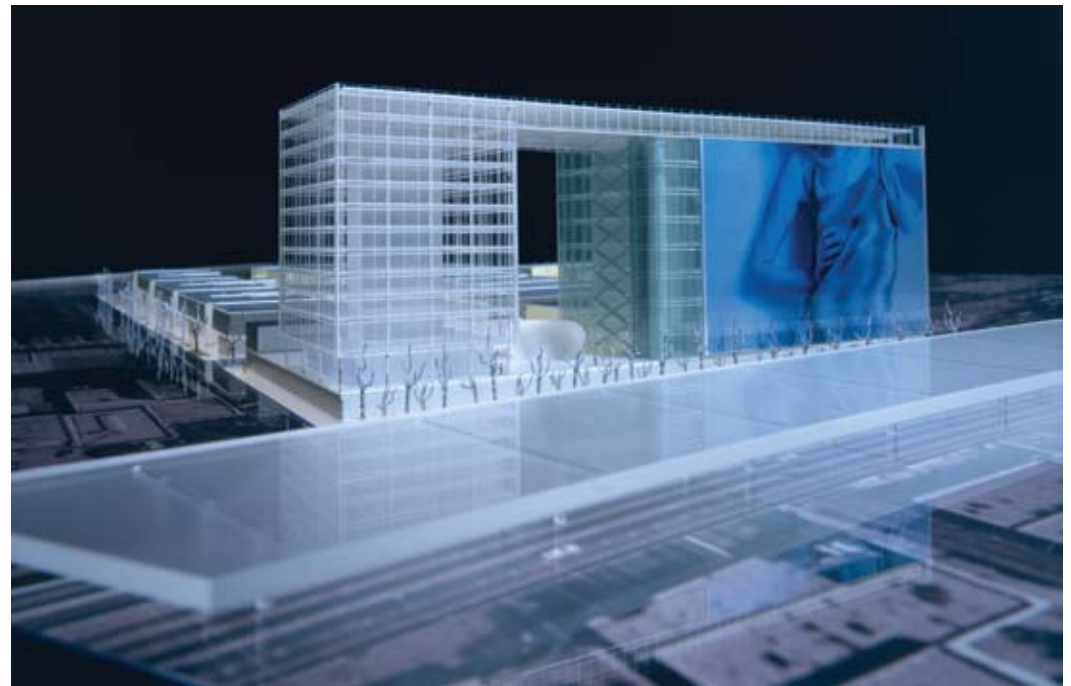
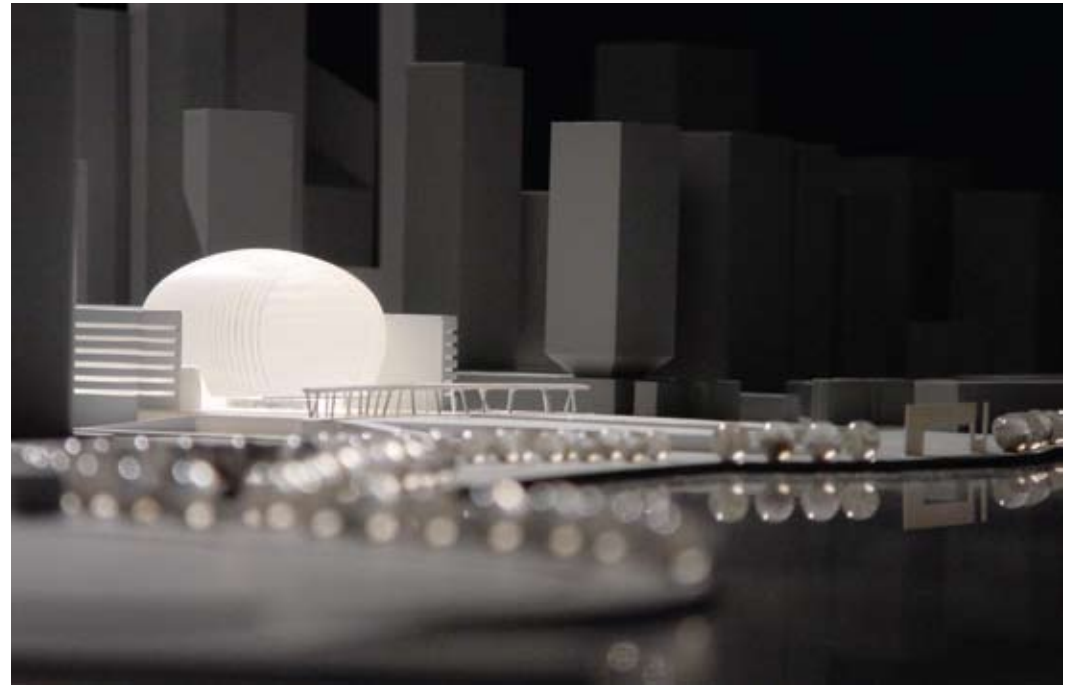


CATHEDRAL OF OUR LADY OF THE ANGELS
LOS ANGELES, CALIFORNIA
SCALE: 1" = 32'
BASE: 96" X 48"

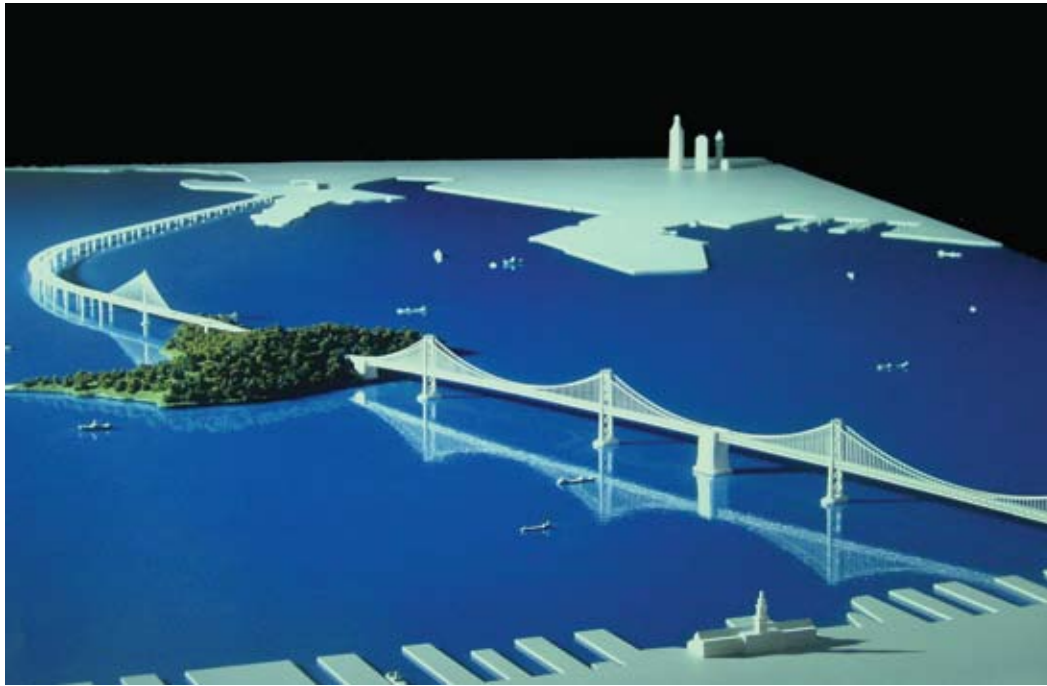
RAFAEL MONEO



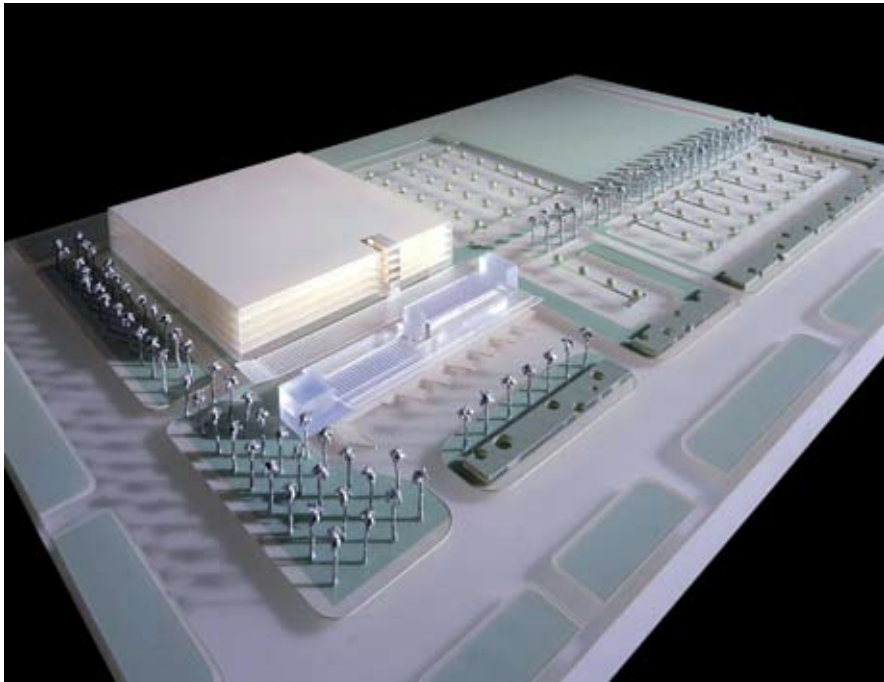
STUDY MODEL
BLOCK BUILDING
SCALE: 1" = 80'
BASE: 36" X 48"



DMJM
SCALE: 1" = 60'
BASE: 36" X 36"



OAKLAND BAY
BRIDGE ESTENSION
OAKLAND, CALIFORNIA
SCALE: 1" = 300'
BASE: 8" X 8"
DANIEL, MANN, JHONSON & MENDEN HALL





RIVER OAKS DISTRICT?
HOUSTON, TEXAS
MIXED USE DEVELOPMENT
SCALE: 1/16"
BASE: 3' X 4'

GENSLER



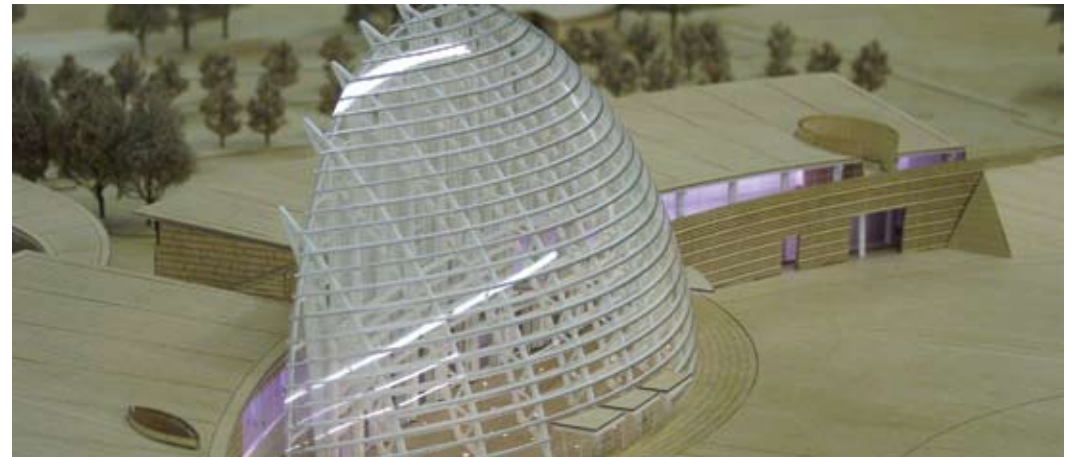
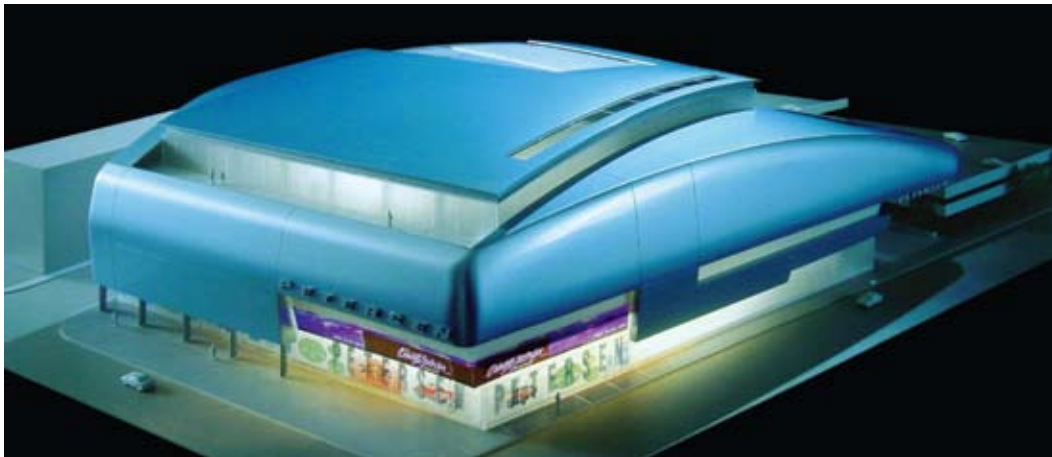
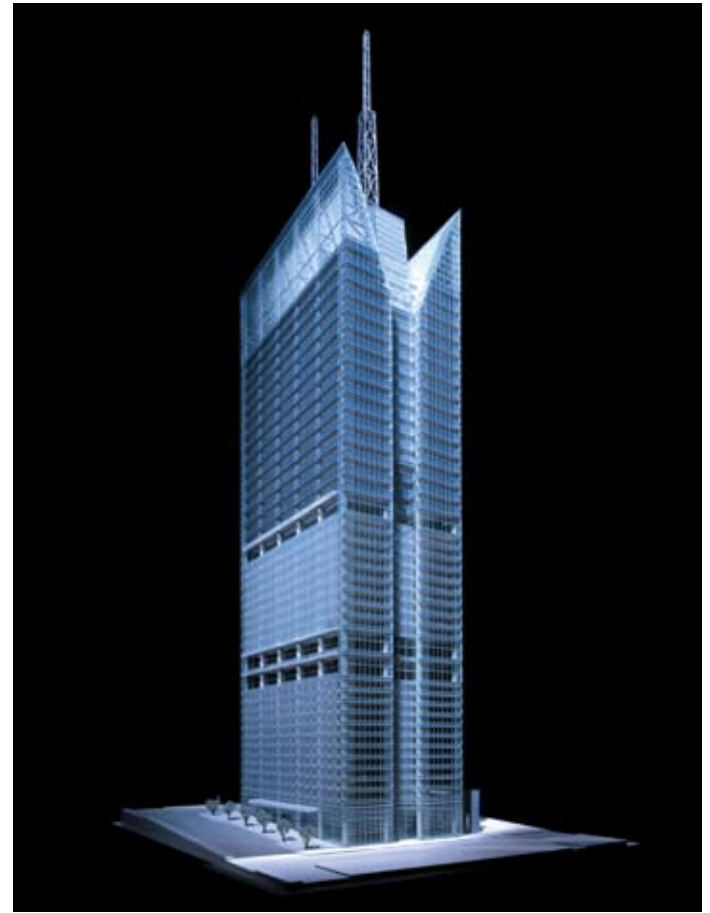
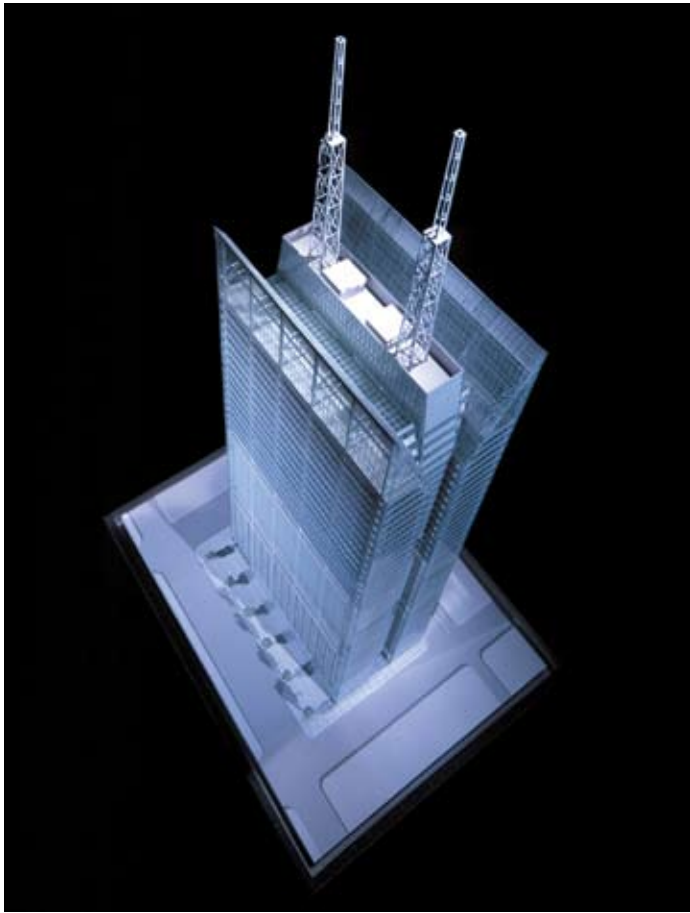
DALLAS, TEXAS
MUSEUM TOWER
SCALE: 3/32
BASE: 38" X 35"
WOOD & PLASTIC

COURIER JOHNSON



2000 AVENUE OF THE STARS
CENTURY CITY, LOS ANGELES, CALIFORNIA
MIXED USE PROJECT
SCALE: 3/16" = 1'
BASE: 96" X 96"

GENSLER



COMPETITION MODEL
PETERSEN AUTOMOTIVE MUSEUM
LOS ANGELES, CALIFORNIA
SCALE:
BASE:

GENSLER



STUDY MODEL



STUDY MODEL



STUDY MODEL



STUDY MODEL



BAKRIE HEADQUARTERS
(MENARA), INDONESIA (?) JAKARTA
SCALE:
BASE:

DIMARZIO KATO ARCHITECTS
PRODUCED BY DMJM



SUDIRMAN TOWER
JAKARTA, INDONESIA
OFFICE
SCALE: 1M = 250M
BASE:

TKL ARCHITECTS, INC.



RIYAD BANK
RIYADH, SAUDI ARABIA
SCALE: 1M = 200M
BASE: 24" X 36"

ALBERT C. MARTIN & ASSOCIATES



GREAT AMERICAN PLAZA
SAN DIEGO, CALIFORNIA
SCALE: 1" = 16'
BASE: 48" X 60"

MURPHY / JAHN ARCHITECTS



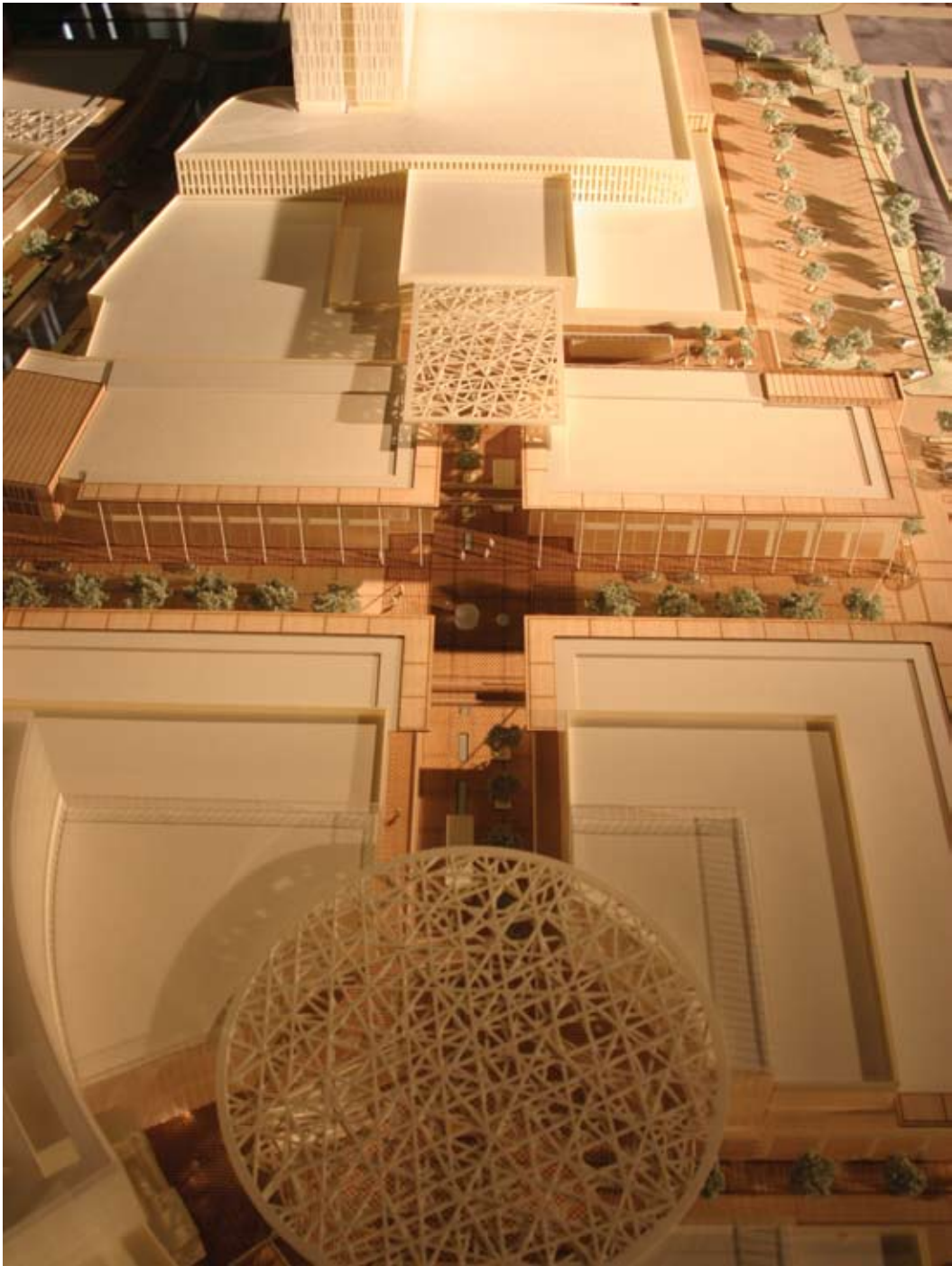
SAN DIEGO CENTER FOR HILLMAN PROPERTIES
 SAN DIEGO, CALIFORNIA
 SCALE: 1" = 32'
 BASE: 24" X 24"

ALBERT C. MARTIN & ASSOCIATES

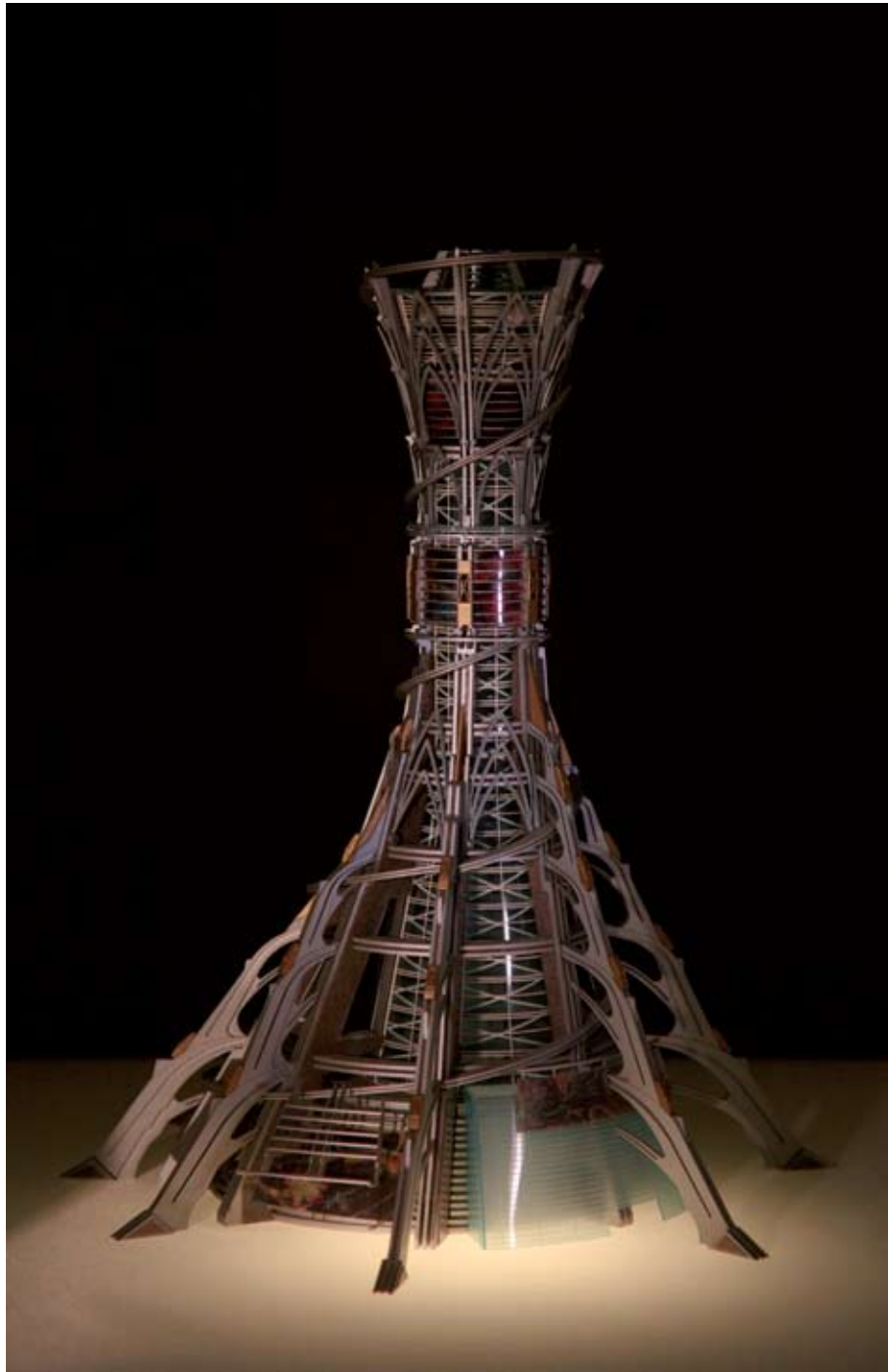


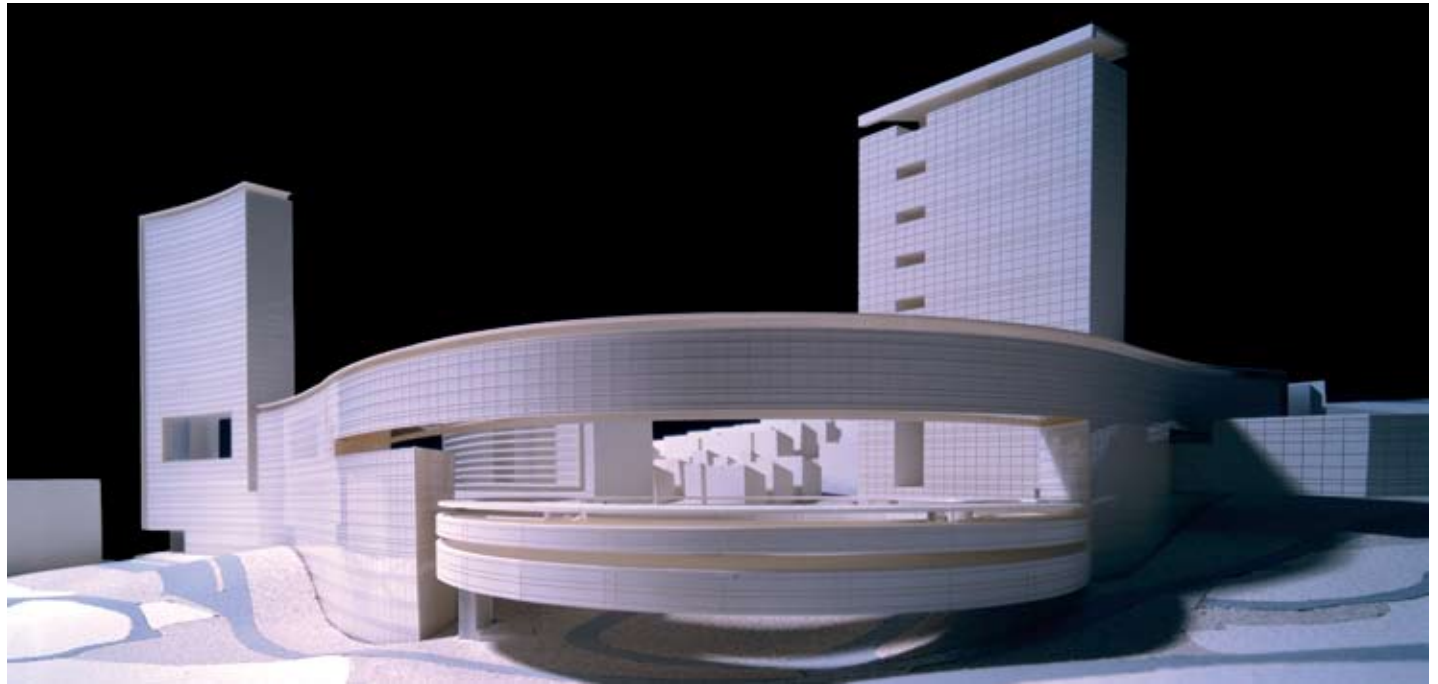
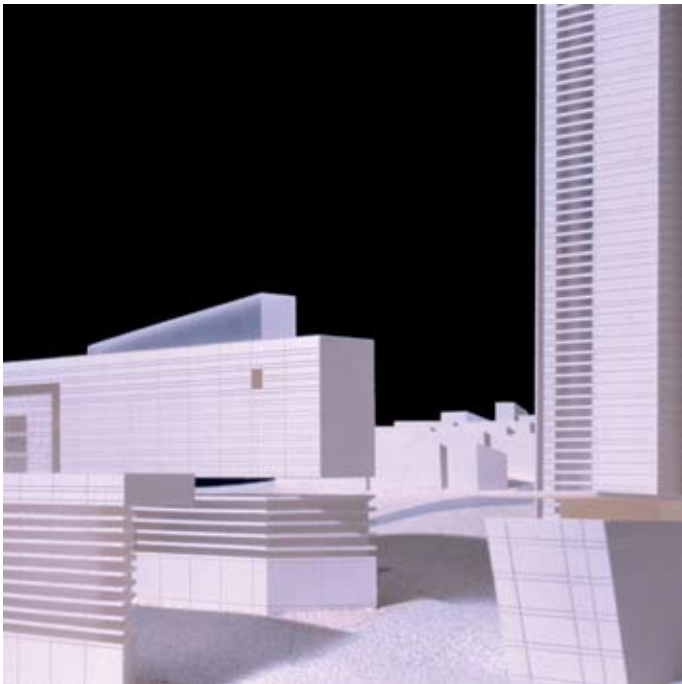
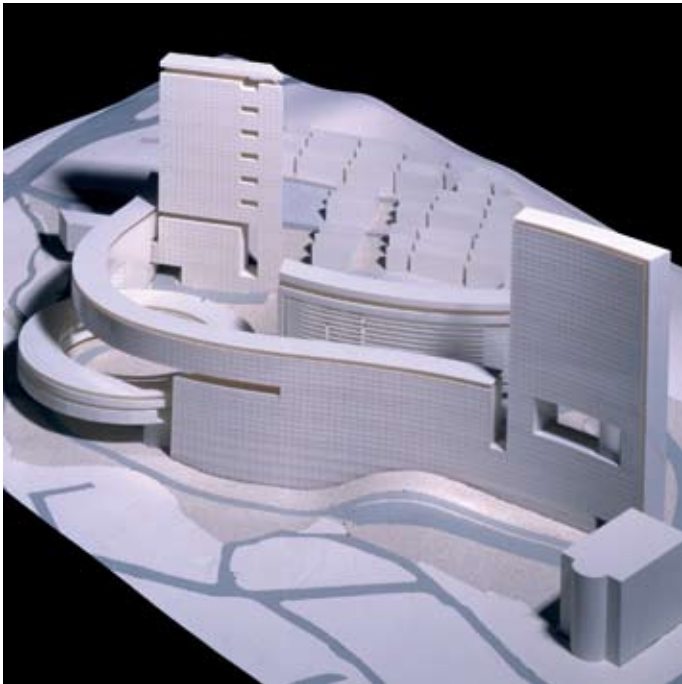
PLAZA CENTER
 CUSE??)
 LOS ANGELES, CALIFORNIA
 SCALE: 1" = 16'
 BASE: 48" X 60"

KIDMORE, OWING & MERRILL, LUP



DIS: DMSM
SCALE: 1" = 50
BASE:
WOOD & PLASTIC
BOULEVARD PLACE





HANNAM HOUSING
SEOUL, SOUTH KOREA
SCALE: 1M = 500M
BASE: 24" X 24"
DMJM

DANIEL, MANN, JOHNSON & MENDENHALL,

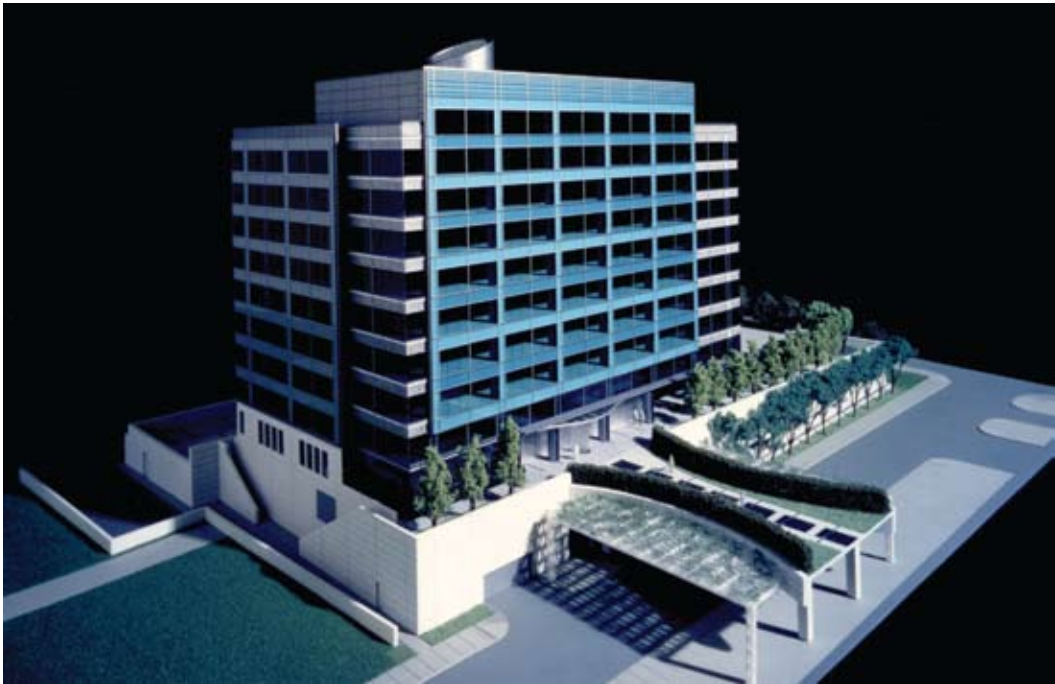


RAND CORPORATE HEADQUARTERS
SANTA MONICA, CALIFORNIA
SCALE: 1/16
BASE: 236" X 48"

DMJM



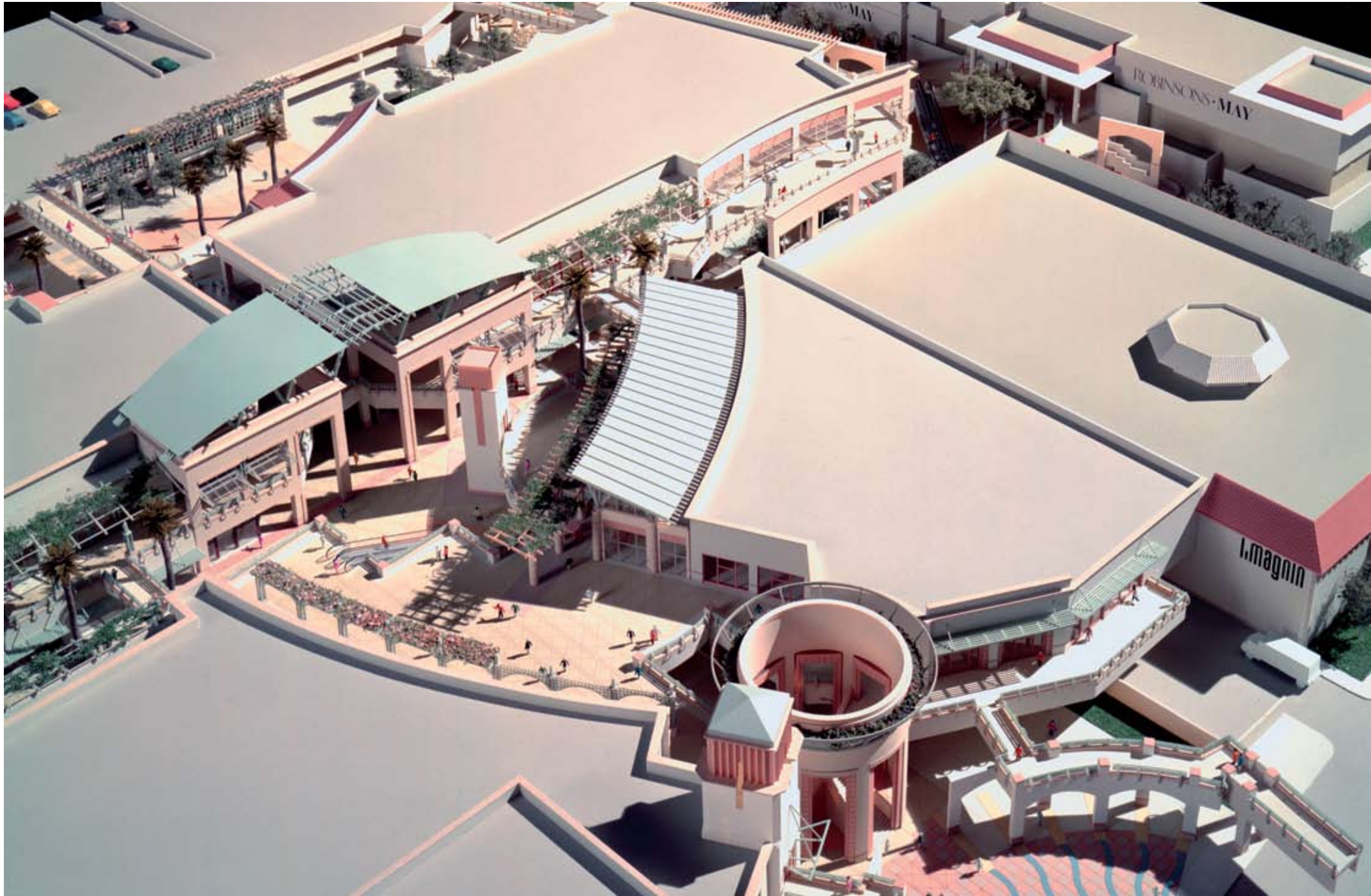
DMJM

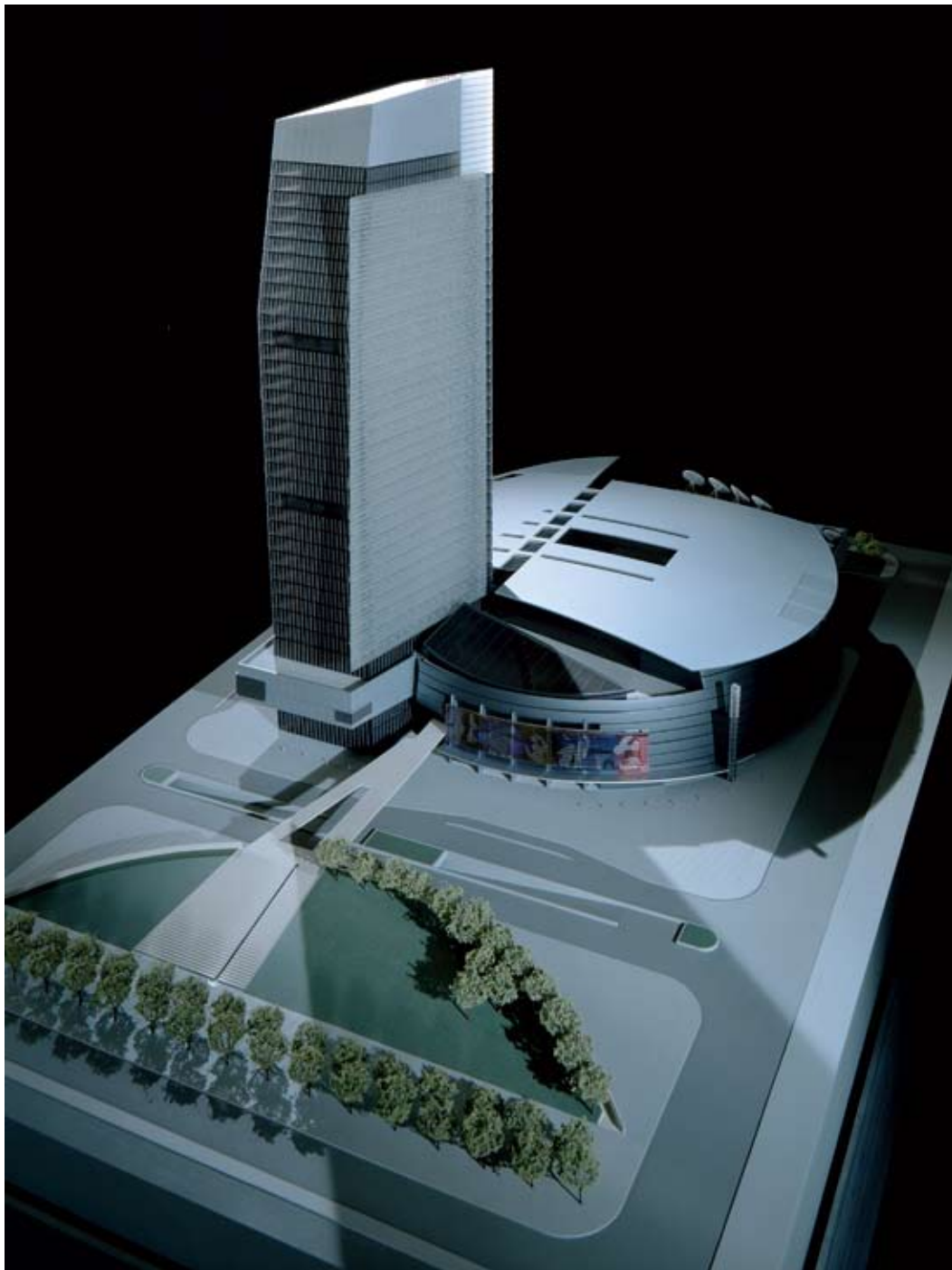


DMJM

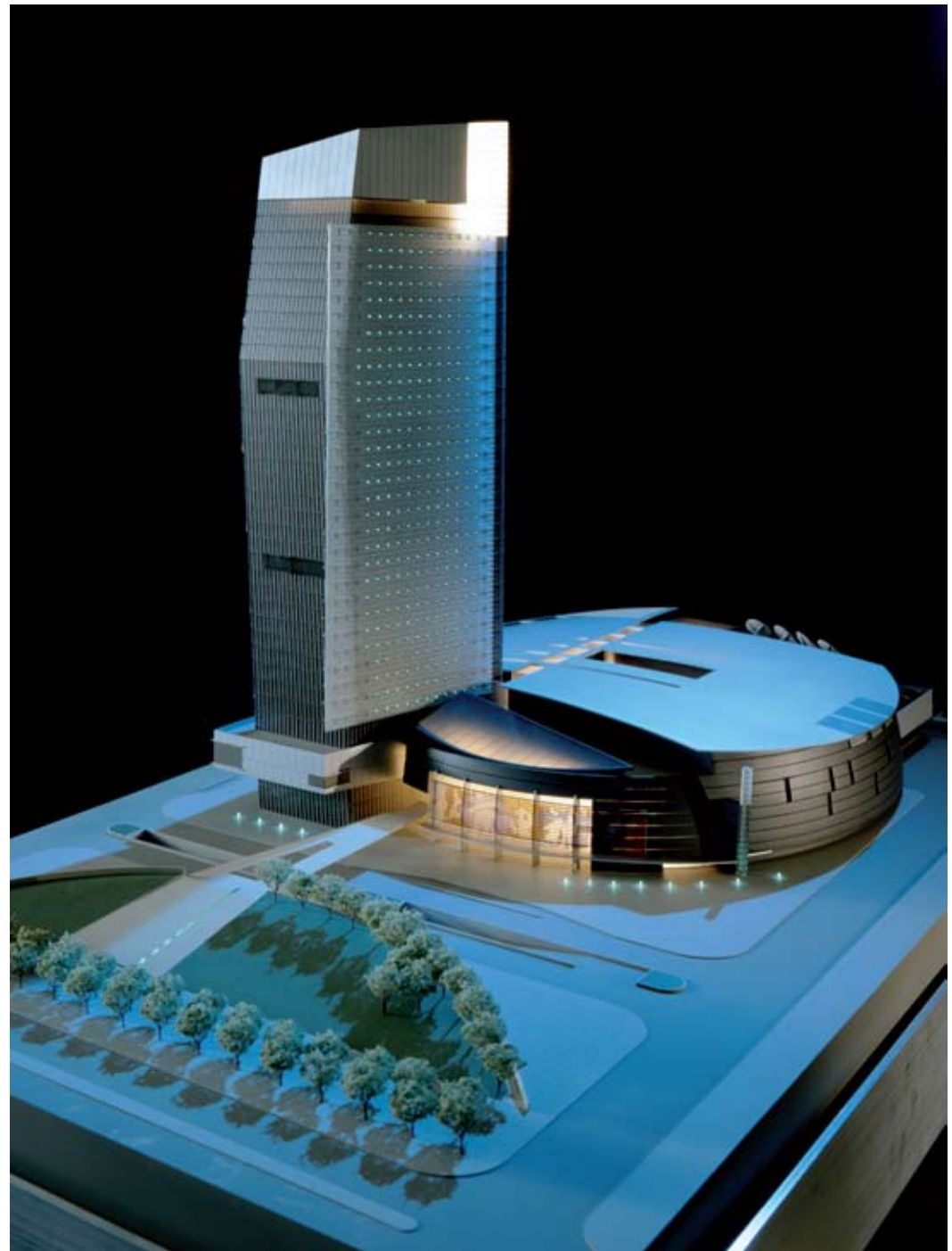


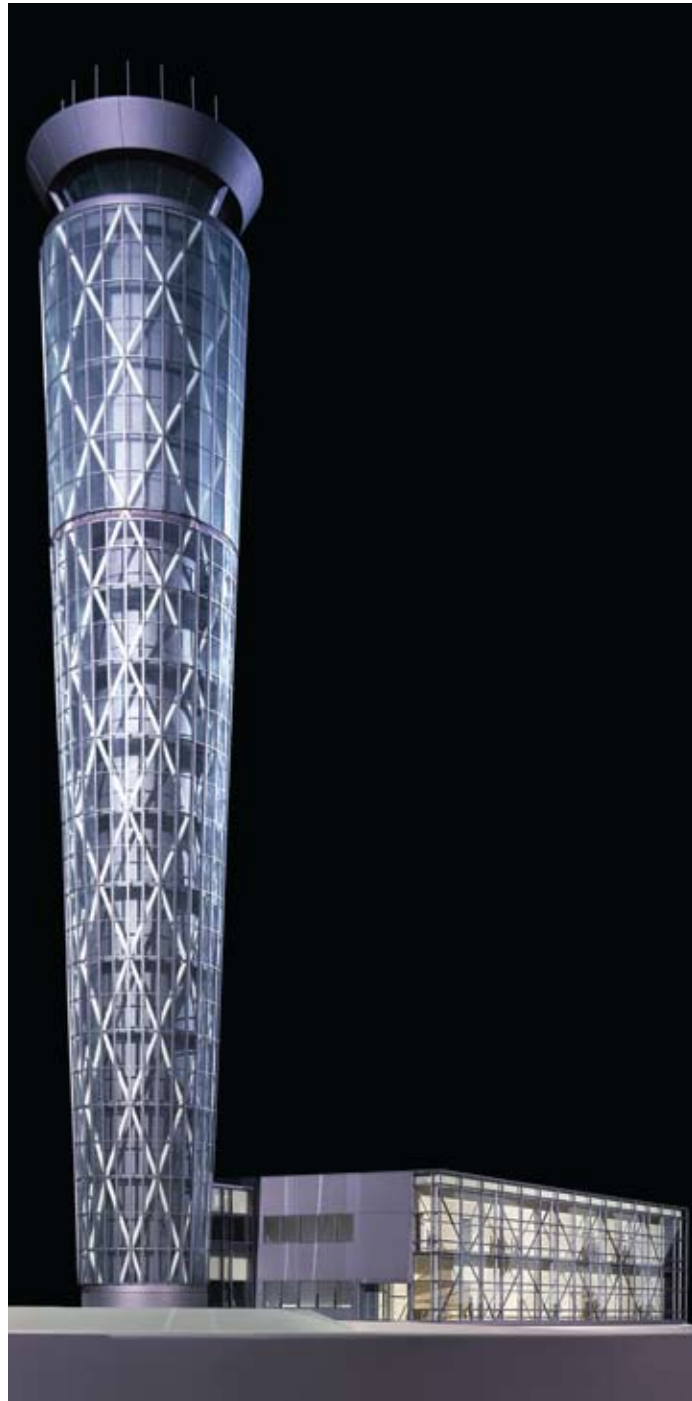
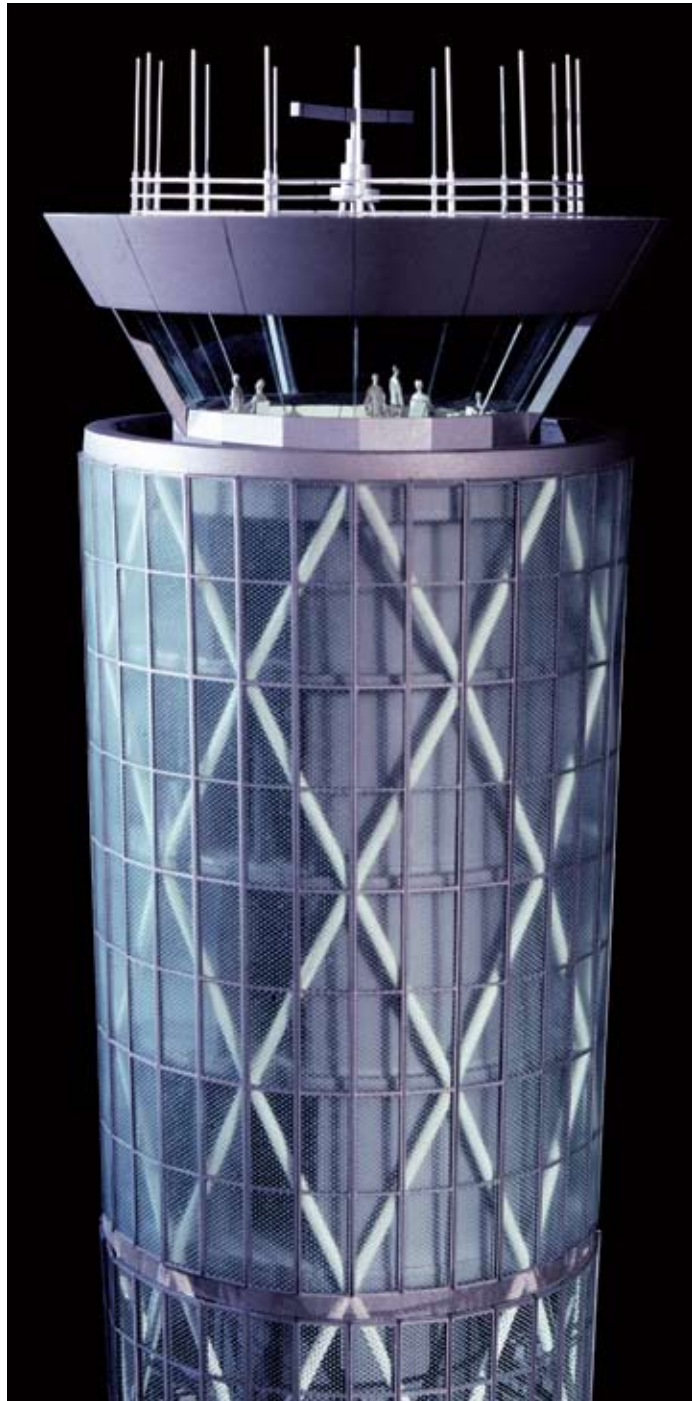
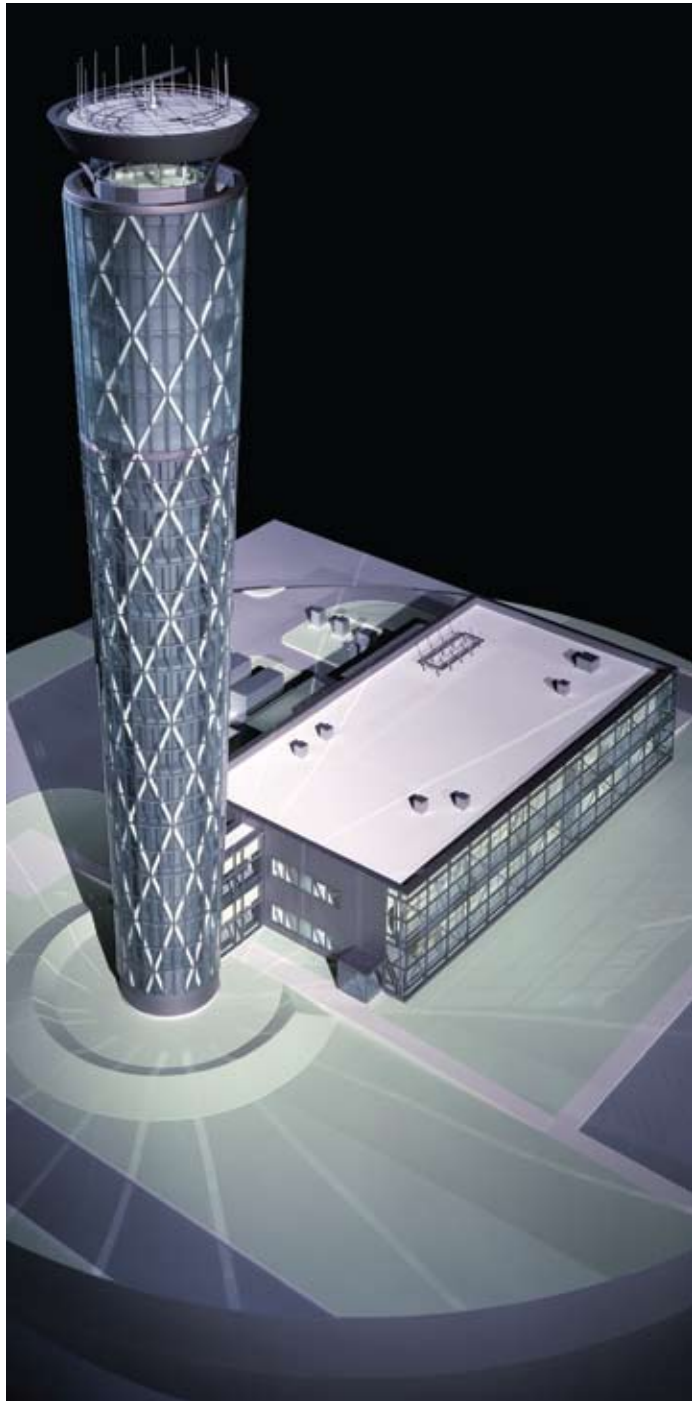
HOK





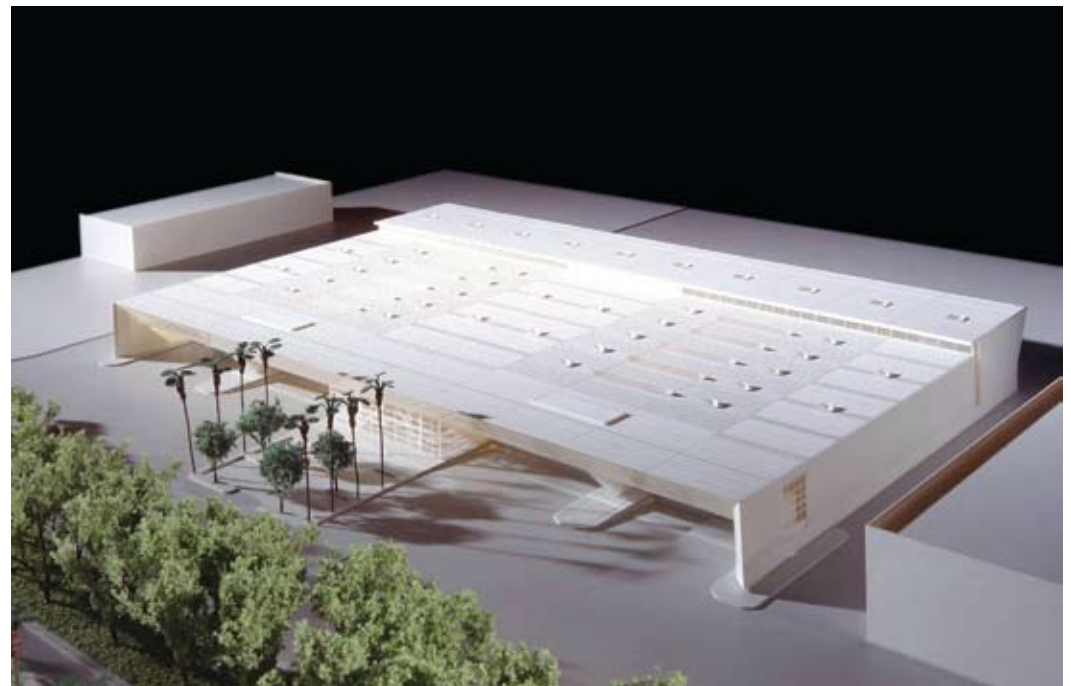
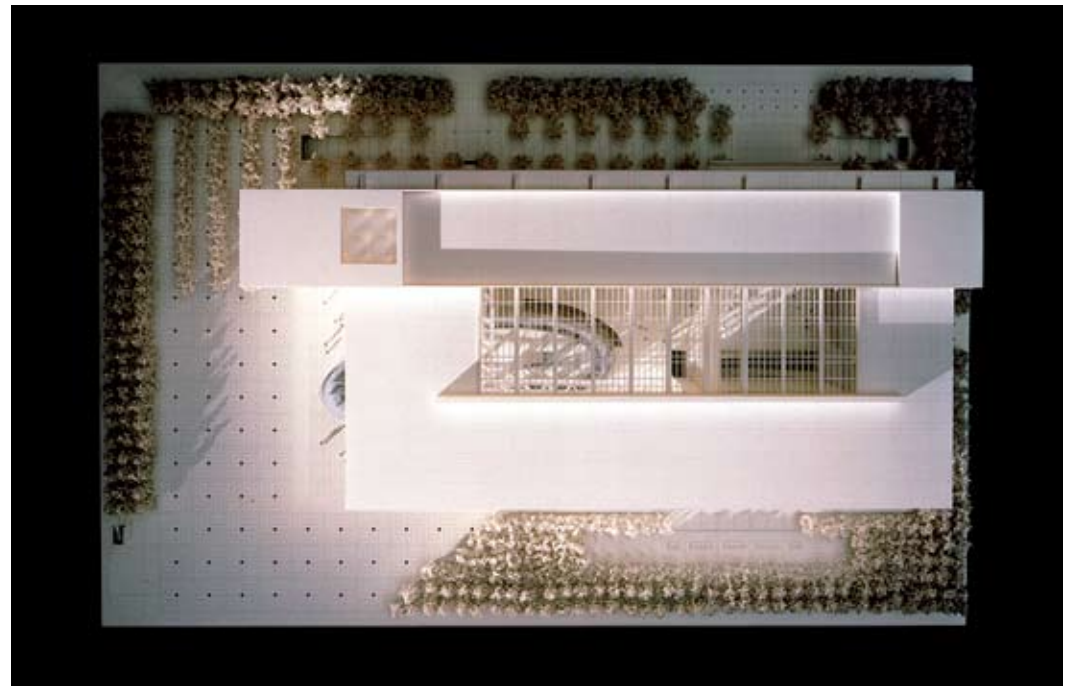
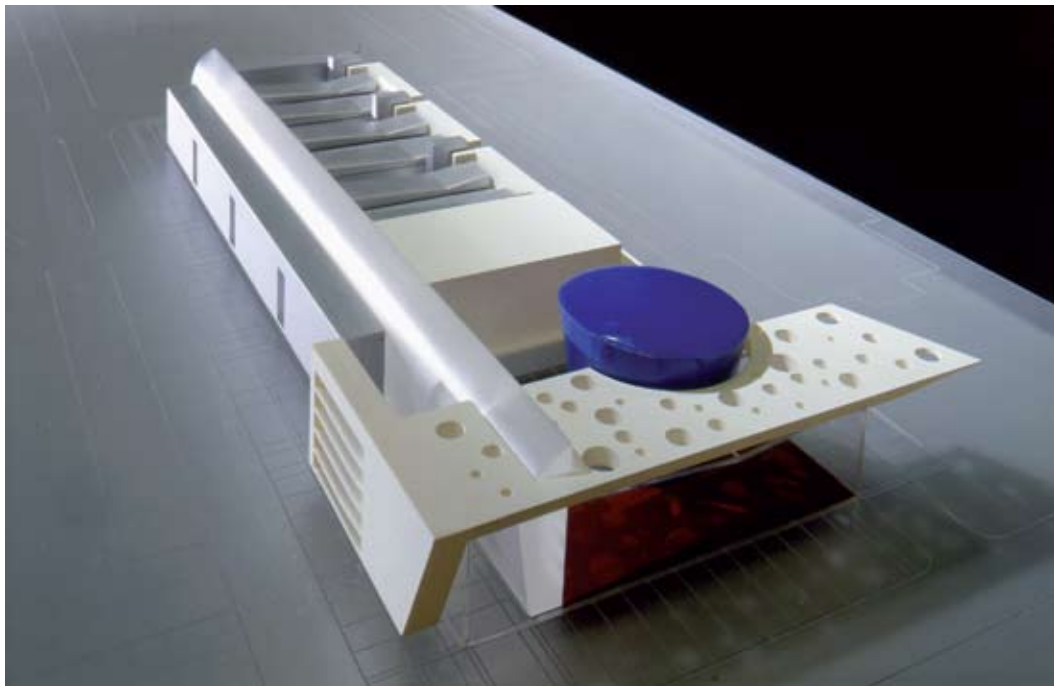
LEO DALY
SCALE: 250M
BASE: 48" X 24"





FAR AIR TRAFFIC CONTROL TOWER
AND TRACON BUILDING
DAYTON, OHIO
SCALE: 1" = DIM
BASE: 24" X 24"

DMJM

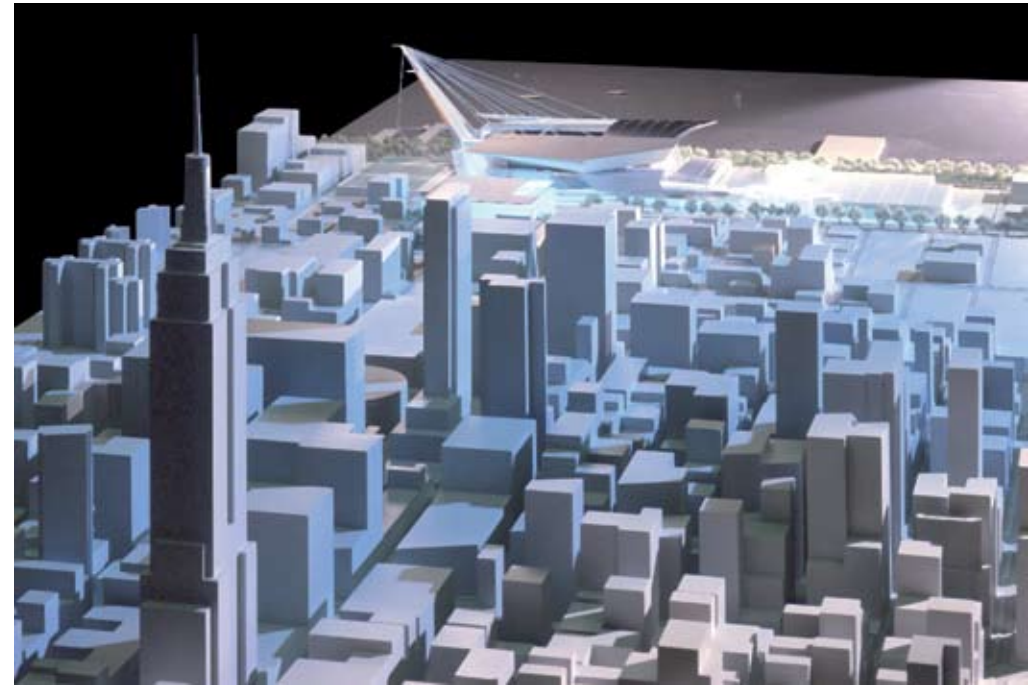


SCALE: BASE: 32" X 24" HOK



CORT HONES
LA
SCALE:
BASE: 24" X 36"

CANNON DESIGN



DENVER INTERNATIONAL AIRPORT
DENVER, COLORADO
SCALE: 1/32
BASE: 60" X 48"

FENTRESS BRADBURN ARCHITECTS; LEO DALY-CANOPY



FOX STUDIOS
LOS ANGELES, CALIFORNIA
SCALE: 1/16
BASE: 36 X 48"

GENSLER

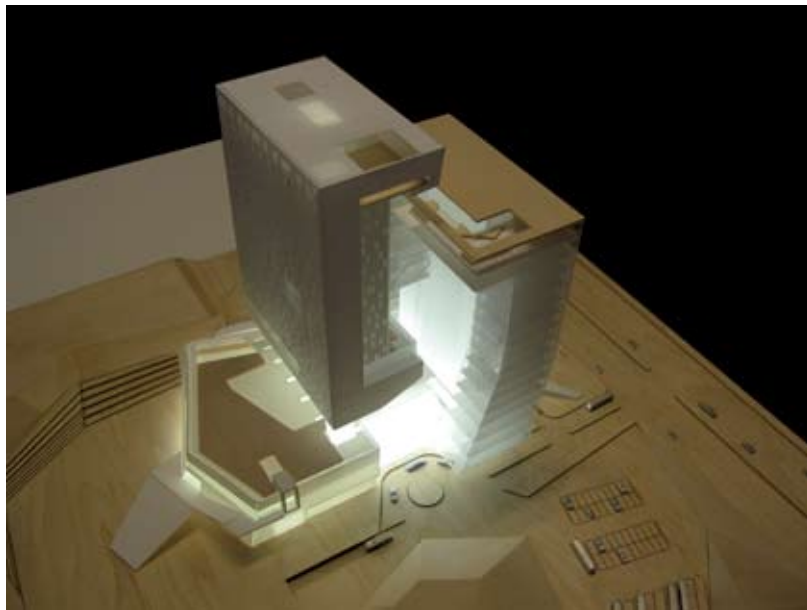
SAN DIEGO CONVENTION CENTER
SAN DIEGO, CALIFORNIA
SCALE: 1/16
BASE:

ARTHUR ERICKSON ARCHITECTS



PROPOSED SANDS CORPORATION CASINO
KANSAS CITY, MISSOURI
SCALE: 1" = 80'
BASE: 48" X 36"

GENSLER





INTERIOR DETAIL MARINA POINTE CONDOMINIUM TOWER



INTERIOR DETAIL MARINA POINTE CONDOMINIUM TOWER





INTERIOR DETAIL AURA TOWER. SACRAMENTO, CALIFORNIA



INTERIOR DETAIL AURA TOWER. SACRAMENTO, CALIFORNIA



INTERIOR DETAIL AURA TOWER. SACRAMENTO, CALIFORNIA



INTERIOR DETAIL AURA TOWER. SACRAMENTO, CALIFORNIA





